



PRODUCT PRESENTATION

quickpanels.com



QuickPanel[™]
Systems Inc.

4mm ACM PRESSURE-EQUALIZED
RAINSCREEN SYSTEM

MODERN. AFFORDABLE. DURABLE.®

© 2019 QuickPanel Systems Inc.

TABLE OF CONTENTS

1. The Future of ACM Panel
2. QuickPanel Product Features
3. Specification, Installation, & Certification
4. QuickPanel Services & Resources
5. Multi-Family & Mixed-Use
6. Commercial
7. Single-Family Residential

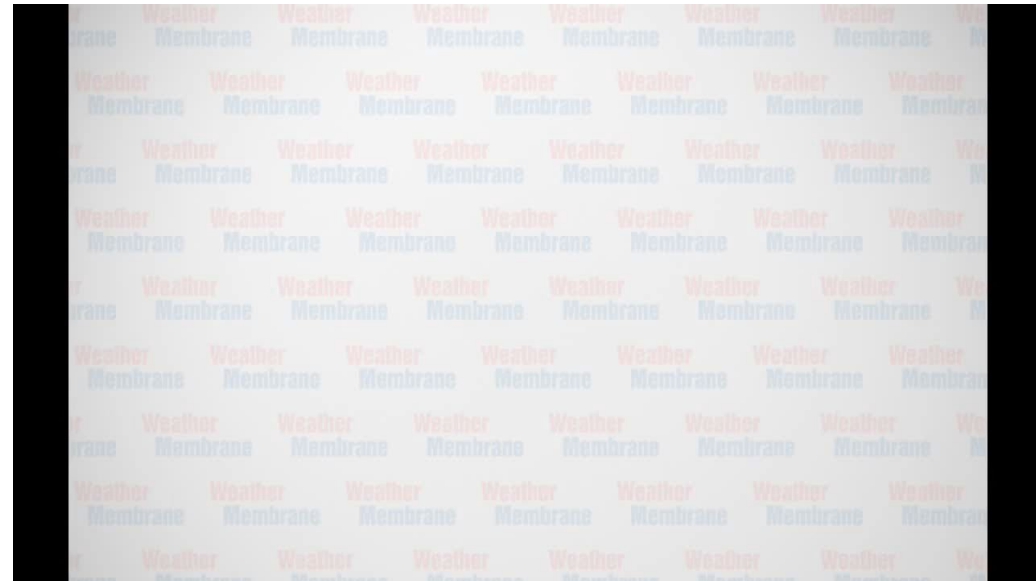
THE FUTURE OF ACM PANEL



THE TRADITIONAL WAY

Typical exterior cladding installations come with a high cost, are labor intensive, have no margin of error in installation, and leave little room for efficient repairs.

This video shows the **complexity** of a typical route and return install:



<https://www.youtube.com/watch?feature=youtu.be&v=CWjCszwWBOQ&app=desktop>

THE FUTURE OF ACM PANEL

Our goal for **QuickPanel Systems** is:

To revolutionize the architectural world that has been dominated by tradition.

That means reimagining every element of exterior design and system delivery to manufacture and deliver an affordable, lightweight, easy-to-install, elegant, durable, and, most importantly, a superior integrated ACM rainscreen system.

QUICKPANEL PRODUCT FEATURES



QUICKPANEL PRODUCT FEATURES



COMPLETE SYSTEM & SERVICES

A comprehensive system to clad your exterior. When you purchase the 4mm ACM QuickPanel System everything necessary to get the system up on the wall is included as one bundle.



QUICKPANEL PRODUCT FEATURES



INTEGRATED 4MM PRESSURE EQUALIZED RAINSCREEN SYSTEM

QuickPanel Systems comes with a complete rainscreen, built-in. System-wide drainage, circulation, and ventilation ensures the integrity and longevity of your building.

Check out this demonstration:



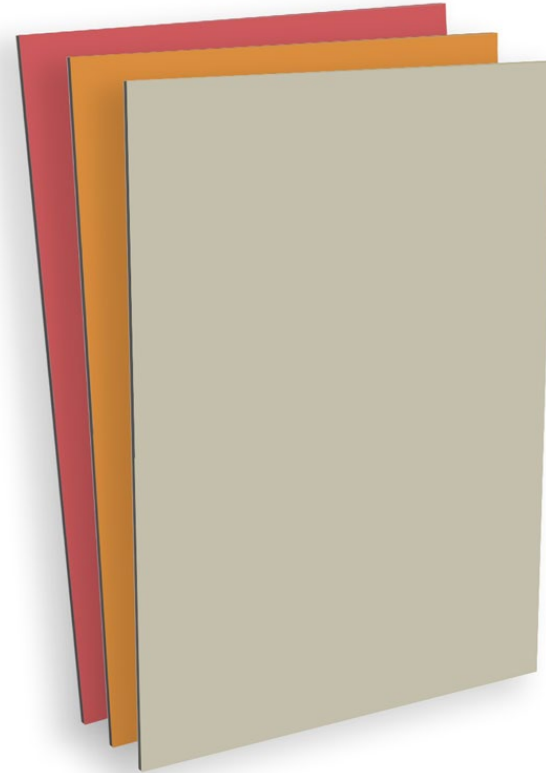
https://youtu.be/StMQJeMC_DQ

QUICKPANEL PRODUCT FEATURES



FIRE RATED PANELS

Our panels consist of two sheets of coil coated 3000 series or 5000 series alloy aluminum bonded to either a mineral filled fire resistant (FR) core.



QUICKPANEL PRODUCT FEATURES



WIND LOAD TESTED

Proven performance in harsh weather conditions. QuickPanel Systems can shield your structure from even the strongest winds. See for yourself in this video:



<https://youtu.be/rZSqOr00d0Y>

QUICKPANEL PRODUCT FEATURES



UV PROTECTED

Protect the aesthetic qualities of your building's exterior. Our panels are sealed with paints specially formulated to defend long-term against ultraviolet radiation (UV), staining, dirt, and radiation. Our paint is also highly-resistant to chipping, peeling, and fading.



QUICKPANEL PRODUCT FEATURES



NO FACE FASTENERS

Deliver a smooth, clean, and modern aesthetic without unsightly face fasteners.



QUICKPANEL PRODUCT FEATURES



EZ.LOCK™ TRIM TECHNOLOGY

Our two-piece trim assemblies ensure maximum edge protection and significantly speed up the installation process by providing open “tab-free” areas to quickly place panels on the wall. The top cap is easily snapped into place to complete the assembly.



QUICKPANEL PRODUCT FEATURES



COMPRESSION ASSEMBLY

QuickPanel Systems can accommodate up to 5/8" of building compression between floors.

Learn more in this video:



QUICKPANEL PRODUCT FEATURES



COLORMATCH™

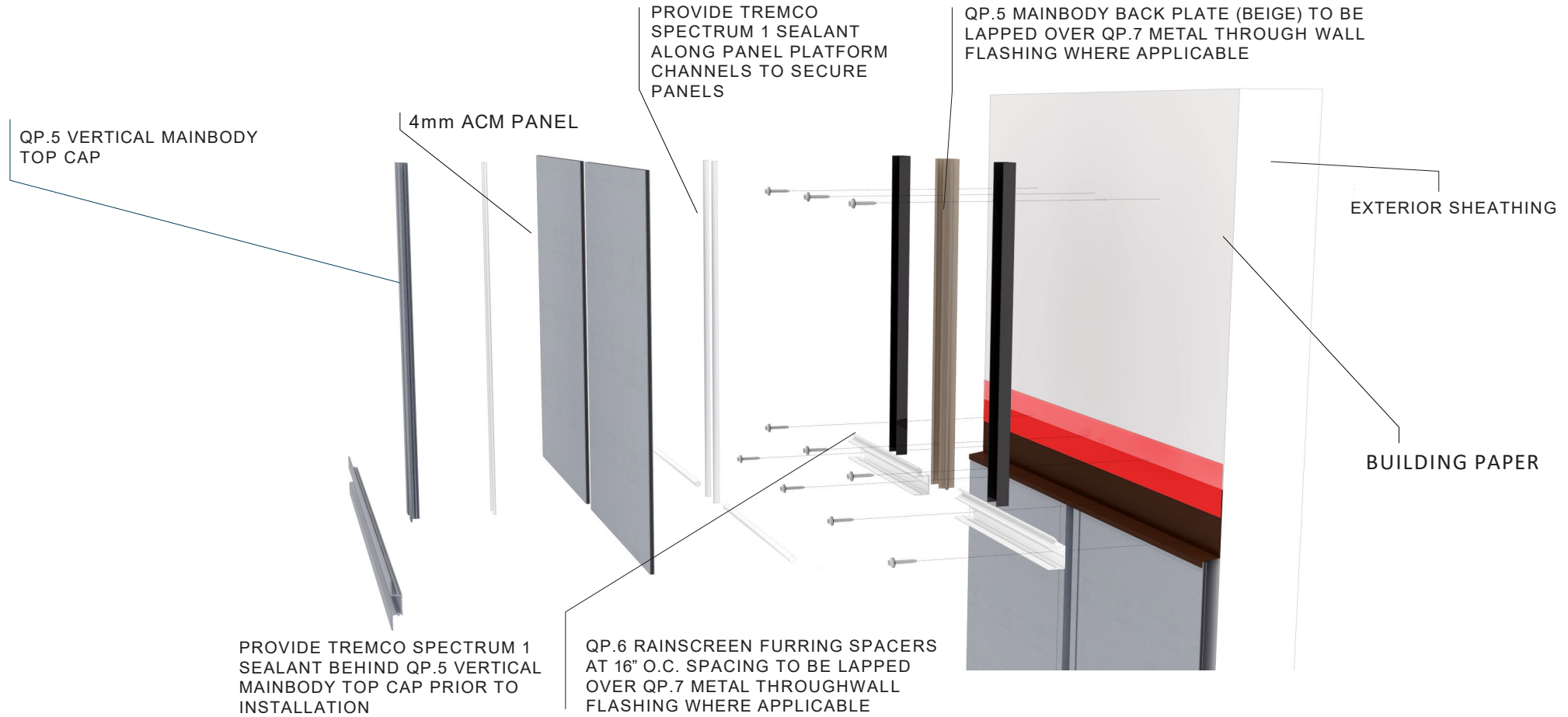
QuickPanel Systems are only limited by your imagination. We offer a wide-range of standard color options, and can easily accommodate custom color options.



SPECIFICATION, INSTALLATION, & CERTIFICATION



QUICKPANEL SPECIFICATION

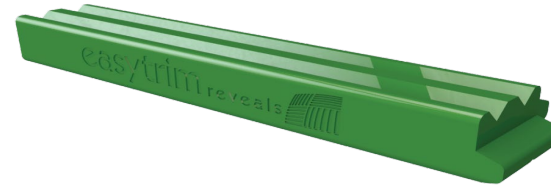


QUICKPANEL INSTALLATION

With QuickPanel, there is no need to specialize your labor or purchase additional specialized equipment.

A free tool pack (shown here) is included with every purchase.

This is all you need:



HAMMER BLOCK



QUICK CLIP



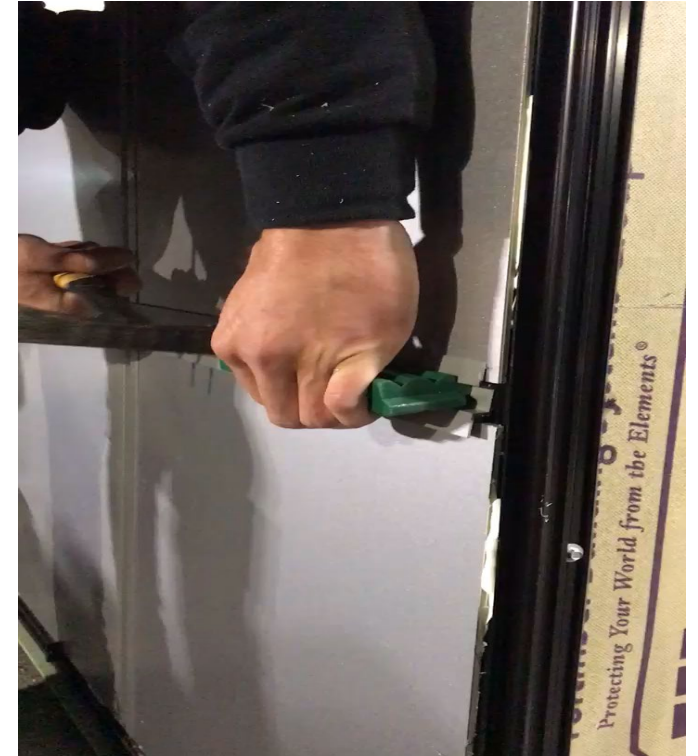
SUCTION CUP

QUICKPANEL INSTALLATION

Take a look at just how easy installation really is with some of our customers showing off their skills:



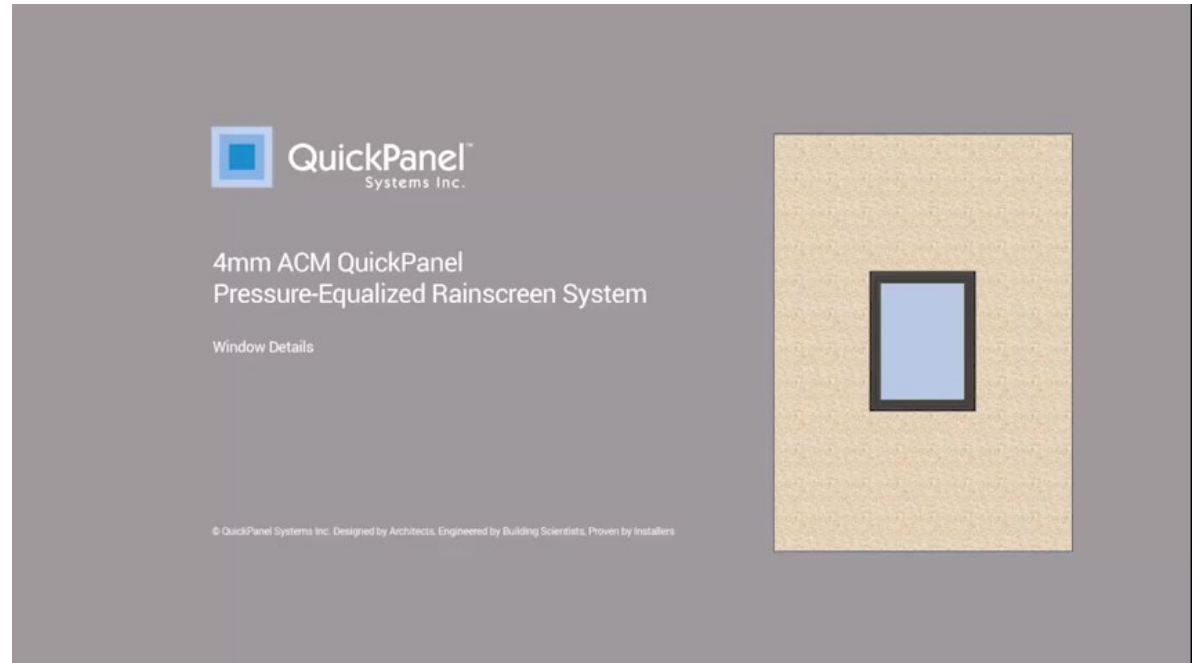
<https://youtu.be/Fizo-CUNFzE>



<https://youtu.be/JmmOGvOddt>

QUICKPANEL INSTALLATION

QuickPanel window details are just as easy-to-install as our entire system and offer a superior clean finish:



<https://youtu.be/QJuJHYR3teA>

QUICKPANEL TESTING & CERTIFICATIONS



S-134 / NFPA-285

*Evaluation of **Fire Propagation** Characteristics of Exterior Non-Load-Bearing Wall Assemblies Containing Combustible Components*



AAMA-508 *Voluntary Test Method and Specification for **Pressure Equalized Rain Screen** Wall Cladding Systems*



ASTM-E330 *Structural Performance of Exterior Windows, Doors, Skylights and Curtain Walls by Uniform Static **Air Pressure***



AAMA-2605 *The highest standard available for organic **coatings** on architectural aluminum extrusions and panels.*

QUICKPANEL SERVICES & RESOURCES



ÉCOLE BEAUSOLEIL

QUICKPANEL SERVICES & RESOURCES

INSTALLATION SUPPORT

QuickPanel has a full project management and on-site installation training team ready to assist in any way possible. We ensure that every job is executed, not only correctly, but efficiently, saving you time and money.



QUICKPANEL SERVICES & RESOURCES

15 to 30-YEAR PRODUCT WARRANTY

QuickPanel Systems are ultra-durable and backed by a long-term 15 to 30*-year warranty.

**duration of warranty is based on the finish selection, please contact your area representative for more information*



QUICKPANEL SERVICES & RESOURCES

NO CHARGE ESTIMATES

Our in-house estimation team provides timely, accurate, and free take-off and cost estimates with purchase for QuickPanel customers.



QUICKPANEL SERVICES & RESOURCES

NO CHARGE SAMPLES

Request a QuickPanel sample board for no charge, and have it shipped right to your door.

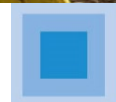


MULTI-FAMILY & MIXED-USE





PROJECT: West Campus, University of Calgary | **LOCATION:** Calgary, Canada | **COLOR:** Palladium (custom color) with matching trims





PROJECT: Ferndale Bosa Foods | **LOCATION:** Vancouver, BC | **COLOR:** Bright Copper Metallic & Charcoal with matching trims





PROJECT: Embassy Suites, Bldg. A | **LOCATION:** Noblesville, Indiana | **COLOR:** Teak & Bamboo (custom) with Clear Anodized trims





PROJECT: Station House | **LOCATION:** Frisco, Texas | **COLOR:** Light Bronze with matching trims



COMMERCIAL





PROJECT: Jewish Family Centre | **LOCATION:** Minneapolis, Minnesota | **COLOR:** Cottage Red (custom color) with matching





PROJECT: A & W | **LOCATION:** Calgary, AB | **COLOR:** Brilliant White & Orange with matching trims



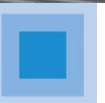


PROJECT: Save-On Foods | **LOCATION:** Calgary, AB | **COLOR:** Cadet Gray, Italian Walnut, Charcoal





PROJECT: Wainwright Medical Centre | **LOCATION:** Wainwright, AB | **COLOR:** Apolic Mahogany panels with Brisk Red trim





PROJECT: Tri Village Medical | **LOCATION:** Edmonton, AB | **COLOR:** Black Panel, Bone White, Charcoal & Silver Metallic with matching trims



SINGLE-FAMILY RESIDENTIAL





PROJECT: Calgary Stampede Lottery Dream Home | **LOCATION:** Calgary, AB | **COLOR:** Limestone with matching trims





PROJECT: Bellevue Residence | **LOCATION:** Calgary, AB | **COLOR:** Silver Metallic with matching trims





PROJECT: Private Residence | **LOCATION:** Canmore, AB | **COLOR:** Charcoal with matching trims



Designed by Architects. Engineered by Building Scientists. Proven by Installers.™

QuickPanel Systems Inc.

4115 – 72nd Avenue SE
Calgary, AB T2C 2G5

quickpanels.com

1 (877) 973-8746



QuickPanel[™]
Systems Inc.

4mm ACM PRESSURE-EQUALIZED
RAINSCREEN SYSTEM