



## ENGINEERING EVALUATION REPORT

Issue Date | 2025-05-22  
Expiry Date | 2025-12-31  
Report Number | 0093-33-1-6034  
Client Name | Engage Building Products Inc.  
Address | 101-4441 76th Ave SE, Calgary, AB T2C 2G8

### Subject

FastPlank System aluminum exterior cladding. ASTM E90 acoustical performance testing.

### Product Description

FastPlank Systems are aluminum cladding planks with fastening clips and trim accessories, serving as an exterior cladding. Planks are extruded 3/64" thick aluminum with a V-Notch™ profile, available in widths of 4" or 6" and lengths of 16'. The plank exterior surface is typically finished with a powder-coat paint in a variety of colors.

### Evaluation

Testing of the siding planks have been conducted in accordance with ASTM E90, *Standard Test Method for Laboratory Measurement of Airborne Sound Transmission Loss of Building Partitions and Elements* at Intertek – Lake Forest, California location. Intertek is an independent testing laboratory accredited by the International Accreditation Service (IAS).

Standard	Product	Sound Transmission Class (STC) <sup>1</sup>	Outdoor-Indoor Transmission Class (OITC) <sup>1</sup>
ASTM E90-23	FastPlank siding high-performance wall system	60	38

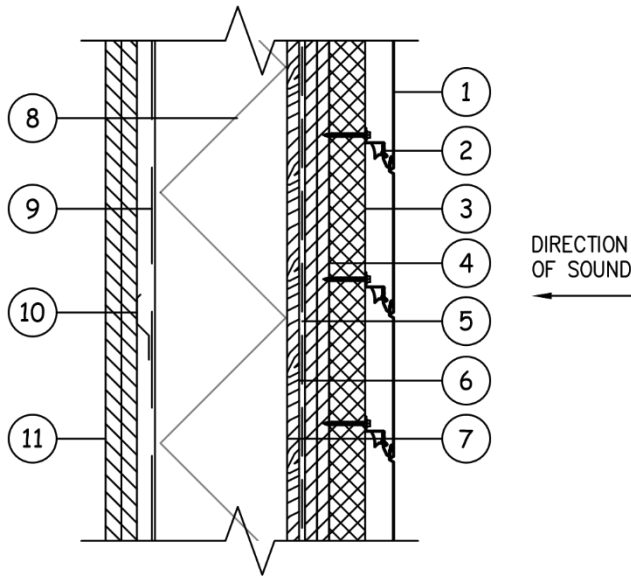
1. STC and OITC classifications are derived from ASTM E413-22 and ASTM E1332-22, respectively.

ASTM E90 is cited in the 2024 International Building Code (IBC) Ch 35 *Referenced Standards*. The FastPlank System assembly details for the sound transmission tests are shown in Figure 1 below. The transmission loss values were obtained for a single direction of measurement, exterior to interior.

### Manufacturing Plants, Labeling and Quality Assurance Entity

The products evaluated in this report are surveyed at the approved manufacturing locations: Calgary, AB Canada, with third-party quality assurance inspections and product certification labeling by Intertek. Labeling shall be in accordance with the requirements of the IBC, and the Accredited Quality Assurance Agency.

## Diagrams



FASTPLANK SIDING HIGH-PERFORMANCE WALL ASSEMBLY	
EXTERIOR TO INTERIOR	
1	FASTPLANK SIDING
2	FASTPLANK CLIPS @ 32" O.C. STAGGERED
3	1-½" ROCKWOOL
4	2-LAYERS ½" CEMENT BOARD
5	TYVEK HOMEWRAP
6	½" PLYWOOD
7	2x6 WOOD STUDS @ 16" O.C.
8	R22 ROCKWOOL BATT INSULATION
9	6 MIL POLYETHYLENE VAPOUR BARRIER
10	½" RESILIENT CHANNEL @ 24" O.C.
11	2-LAYERS 5/8" TYPE X GYPSUM BOARD

Figure 1. Diagram for FastPlank high-performance sound transmission wall assembly

## Source Documents

The published versions of the following sources, current on the date of this evaluation, were used as reference material to support the conclusions made:

1. Acoustical Performance Test Results: Intertek report S2327.01-303-11-R0, dated 2025-02-25.

## Signed

This report has been prepared and reviewed on behalf of BOCA by:



Chris Bowness, P.Eng., P.E.

2025-05-22

Date



### EVALUATION REPORT TERMS:

1. This report is a general evaluation of the building code sections and/or standards requirements as identified and applies only to the samples that were evaluated. It does not imply any endorsement or warranty, nor that the signatory Engineer is the Designer of Record of any construction project for which the information is used.
2. This Evaluation Report expires 2025-12-31, open to renewal. Up to the renewal date, the report is valid until such time as the named product(s) changes, the Quality Assurance Agency changes, or provisions of the Code that relate to the product change.

### CERTIFICATION OF INDEPENDENCE:

1. Boca Engineering Co., its employees and shareholders, do not have, nor do they intend to or will acquire, a financial interest in any company manufacturing or distributing products that they evaluate.
2. Boca Engineering Co. is not owned, operated, or controlled by any company manufacturing or distributing products that they evaluate.

-END-