



## ENGINEERING EVALUATION REPORT

Report Number	0093-41	Issue Date	2025-10-31
Client	Engage Building Products Inc.	Issue Number	1-6061
Address	101-441 76th Ave SE, Calgary, AB T2C 2G8	Expiry Date	2026-12-31

### Subject

**QuickPanel Systems with 4mm Alfrex Aluminum Composite Panels, CAN/ULC S134 Exterior Wall Assembly Fire Testing Results.**

### Product Description

QuickPanel Systems are aluminum composite panels with trims serving as an exterior wall covering.

**Aluminum Composite Material (ACM):** The composite panel is nominally 4mm in thickness, composed of an inside and outside skin of nominal 0.5mm thick aluminum sheets bonded to a nominal 3mm thickness inner core of polyethylene with mineral (magnesium hydroxide) fire-retardant, and available in lengths of up to 16 ft.

**Sub-framing Trims:** The z-girts are 3" 18 gauge. The trims are two-piece 6063-T6 aluminum extrusions as shown in the attachment.

**Fasteners:** The fastener used to attach the trim backplate to 3" 18 ga. Z-girts is #10-12 x 3/4" HWH Self-Drilling Screw. Fastener used to attach the Z-girt to framing is #10-12 x 1-1/2" HWH Self-Drilling Screw.

ACM panels are held in place with the flanges of the snap-fit top cap of the edge trims.

### Evaluation

A full-scale construction mock-up test with 4mm ACM QuickPanel Systems exterior cladding has been conducted in accordance with CAN/ULC-S134-13, *Standard Method of Fire Test of Exterior Wall Assemblies* at Intertek – Elmendorf, Texas location. Intertek is an independent testing laboratory accredited by the International Accreditation Service (IAS).

Standard	Property	Sample Description	Criteria	Test Results
CAN/ULC-S134	Fire Test	QuickPanel 4mm ACM with no stiffeners, 18-ga Z-girts, 3" semi-rigid insulation, 5/8" exterior sheathing and steel stud framing	Flaming on or in the wall assembly shall not spread more than 5 m above the opening.	PASS
			The heat flux during the flame exposure on the wall assembly shall not be more than 35 kW/m <sup>2</sup> at 3.5 m above the opening.	PASS

### Code Compliance

The results of this testing comply with the requirements of CAN/ULC-S134-13 and 2020 National Building Code of Canada (NBCC) section 3.1.5.5(1)(b) *Combustible Cladding on Exterior Walls*.

The tested wall assembly is for applications where the exterior cladding is required to meet this exception of being a non-combustible material, in accordance with the 2020 NBCC. The wall construction details can be found in the attachment below, installed per the manufacturer's instructions.



The scope of this report is limited to the test results and corresponding wall construction details of test report G106027612SAT-001-R0, dated April 30, 2025.

### Manufacturing Plants, Labeling and Quality Assurance

The products evaluated in this report were sampled at the approved manufacturing locations: Calgary AB, with third-party quality assurance inspections and product certification labeling by Intertek. Labeling shall be in accordance with the requirements of the NBCC, and the Accredited Quality Assurance Agency.

---

### Source Documents

The published versions of the following sources, current on the date of this evaluation, were used as reference material to support the conclusions made:

1. CAN/ULC-S134-13 results: Intertek report G106027612SAT-001-R0, dated April 30, 2025.

---

### Signed

This report has been prepared and reviewed on behalf of BOCA by:

2025-10-31

Chris Bowness, P.Eng., P.E.

Date



#### EVALUATION REPORT TERMS:

1. This report is a general evaluation of the building code sections and/or standards requirements as identified and applies only to the samples that were evaluated. It does not imply any endorsement or warranty, nor that the signatory Engineer is the Designer of Record of any construction project for which the information is used.
2. This Evaluation Report expires 2026-12-31, open to renewal. Up to the renewal date, the report is valid until such time as the named product(s) changes, the Quality Assurance Agency changes, or provisions of the Code that relate to the product change.

#### CERTIFICATION OF INDEPENDENCE:

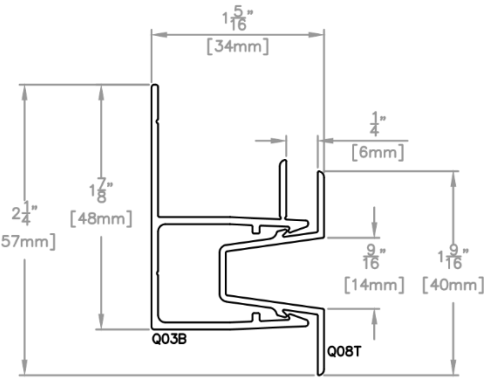
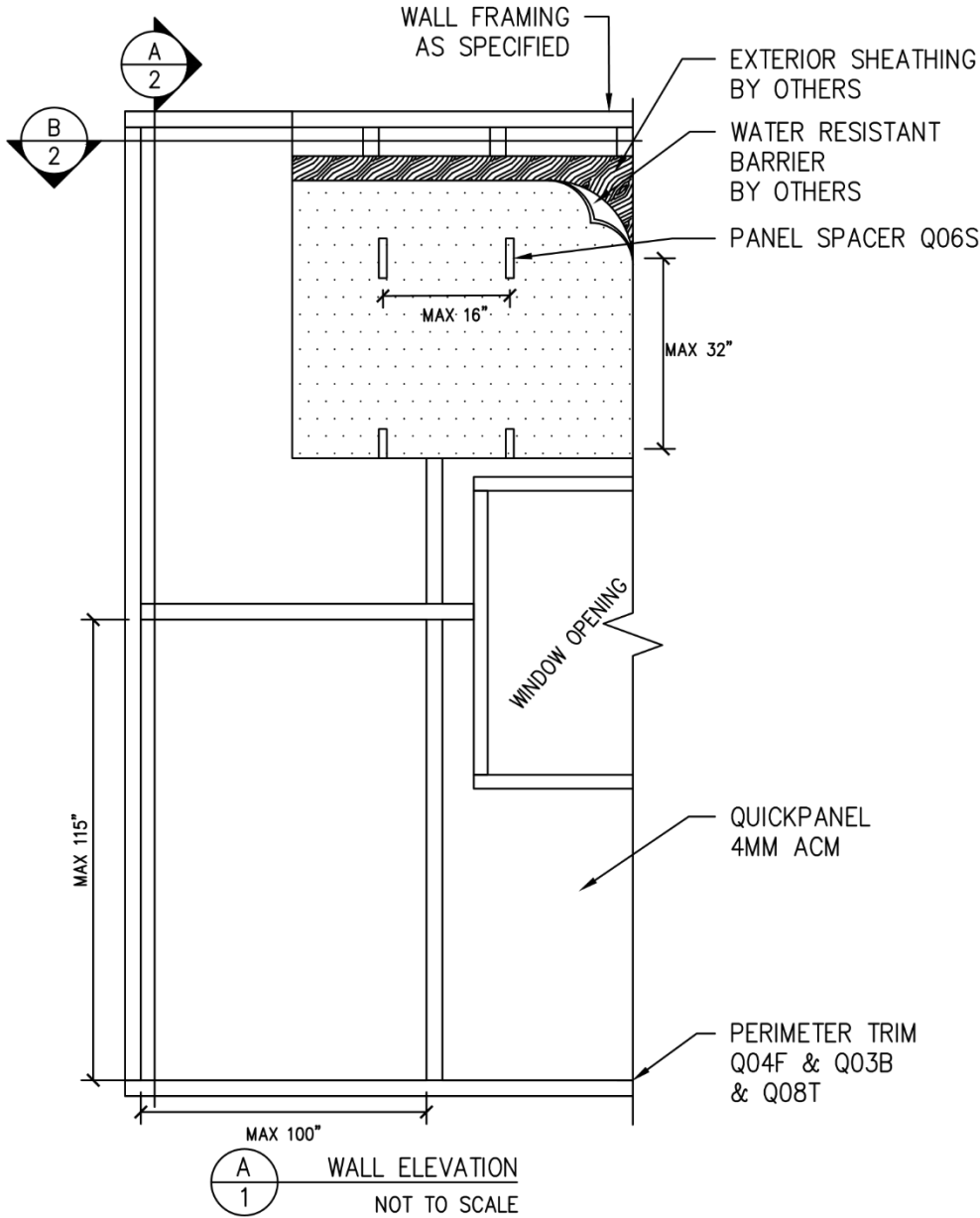
1. Boca Engineering Co., its employees and shareholders, do not have, nor do they intend to or will acquire, a financial interest in any company manufacturing or distributing products that they evaluate.
2. Boca Engineering Co. is not owned, operated or controlled by any company manufacturing or distributing products that they evaluate.

-END-

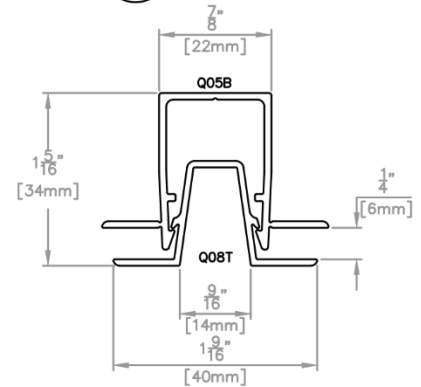
---

### ATTACHMENT: ASSEMBLY DIAGRAMS

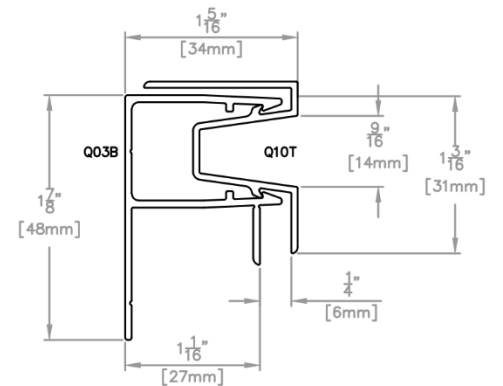
Begins next page.



**B**  
1 STARTER TRIM  
NOT TO SCALE



**C**  
1 VERTICAL JOINT  
NOT TO SCALE

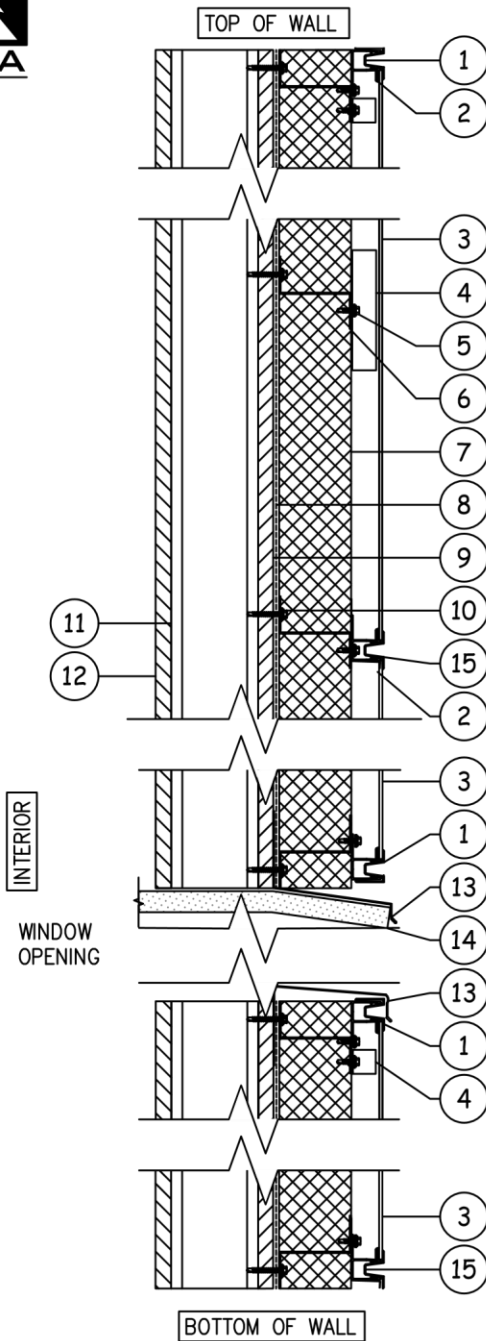


**D**  
1 TERMINATION TRIM  
NOT TO SCALE

COPYRIGHT © 2025 RESERVED. THESE PLANS AND DESIGNS ARE AT ALL TIMES THE PROPERTY OF BOCA ENGINEERING TO BE USED FOR THE PROJECT SHOWN. WRITTEN CONSENT IS REQUIRED FROM THE ENGINEER BEFORE ANY REPRODUCTION.

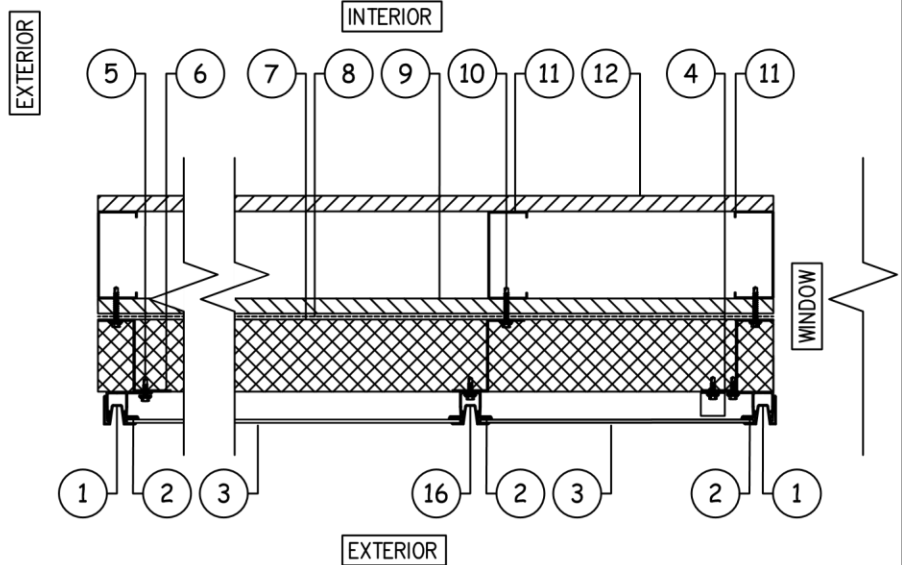
<b>BOCA ENGINEERING CO.   SPAR</b> STRUCTURAL & CIVIL CONSULTANTS	DATE	OCTOBER 31, 2025		0	FOR PUBLICATION		CB
	DRAWING NO.	SHEET NO.	SCALE	DES.	DRN.	CHK.	APP
CLIENT	PROJECT	TITLE					
ENGAGE BUILDING PRODUCTS QUICKPANEL SYSTEMS	QUICKPANEL 4mm ACM PANELS CAN/ULC S134 EVALUATION	CAN/ULC S134 TEST INSTALLATION ASSEMBLY DIAGRAMS		TH	TH	CB	

DRAWING FOR ENGINEERING  
EVALUATION REPORT – NOT  
FOR USE AS CONSTRUCTION  
DESIGN DOCUMENTS



A  
2 WALL SECTION  
NOT-TO-SCALE

QUICKPANEL CAN/ULC S134 FIRE TEST WALL ASSEMBLY	
1	QUICKPANEL TRIM Q03B & Q10T
2	DOWSIL 995 STRUCTURAL SILICONE
3	QUICKPANEL 4mm ACM PANEL
4	QUICKPANEL SPACER [Q06S] @ 16" O.C. HORIZ., 32" O.C. VERT.
5	#10-12 HWH x 3/4" SELF-DRILLING SCREW
6	3" 18-GAUGE Z-GIRT @ 32" O.C.
7	ROCKWOOL 3" SEMI-RIGID INSULATION
8	TYVEK HOMEWRAP
9	5/8" DENSGLOSS EXTERIOR SHEATHING
10	#10-12 HWH x 1-1/2" SELF-DRILLING SCREW
11	1 3/8" x 3 5/8" 18-GA, 33-KSI STEEL STUDS @ 16" O.C.
12	1/2" LIGHTWEIGHT GYPSUM SHEATHING
13	METAL FLASHING BY OTHERS
14	1" NOMINALLY THICK 6 PCF FIBER BLANKET
15	QUICKPANEL TRIM Q03B & Q08T & Q04F
16	QUICKPANEL TRIM Q05B & Q08T



B  
2 WALL PLAN VIEW  
NOT-TO-SCALE

COPYRIGHT © 2025 RESERVED. THESE PLANS AND DESIGNS ARE AT ALL TIMES THE PROPERTY OF BOCA ENGINEERING TO BE USED FOR THE PROJECT SHOWN. WRITTEN CONSENT IS REQUIRED FROM THE ENGINEER BEFORE ANY REPRODUCTION.

<b>BOCA ENGINEERING CO.   SPAR</b> STRUCTURAL & CIVIL CONSULTANTS	DATE	OCTOBER 31, 2025	0	FOR PUBLICATION	CB	
	DRAWING NO.	SHEET NO.	SCALE	DES.	DRN.	
CLIENT	PROJECT	TITLE	REV.	ISSUE	APP	
ENGAGE BUILDING PRODUCTS QUICKPANEL SYSTEMS	QUICKPANEL 4mm ACM PANELS CAN/ULC S134 EVALUATION	CAN/ULC S134 TEST INSTALLATION ASSEMBLY DIAGRAMS	6061-SK1	2 OF 2	NOT TO SCALE	TH TH
					CHK.	CB

DRAWING FOR ENGINEERING EVALUATION REPORT – NOT FOR USE AS CONSTRUCTION DESIGN DOCUMENTS